

Creative COMMUNITY

— COLLEGE OF ARTS & MEDIA —



BELVIN-BUCHANAN HALL



SAM HOUSTON STATE UNIVERSITY
MEMBER THE TEXAS STATE UNIVERSITY SYSTEM



BELVIN-BUCHANAN HALL

COLLEGE OF ARTS & MEDIA (CAMCC) CREATIVE COMMUNITY

Enjoy the many ways you can unleash your creativity and find inspiration while living among other student artists, communicators, and performers in CAM Creative Community. With modern amenities including access to stages, screens, and studios, Creative Community is open exclusively to College of Arts & Media majors.

CATERING TO CREATIVES

Located in Belvin Hall, CAM Creative Community is a partnership between Residence Life and the College of Arts & Media to provide residents a living environment where you will be exposed to new ideas, learn strategies to enhance your academic performance, and have fun! Programs have been designed specifically for each of the majors within the College of Arts & Media to recognize human diversity and develop artistic identity. As a resident in Creative Community you will not only experience programming in your discipline, but you will also have opportunities to share ideas and collaborate with those in other CAM majors in an environment that nurtures creativity. Because Creative Community has been designed with artistic and intellectual activities in mind, you will also have access to equipment on site to assist you with your class projects, rehearsals, and productions.



LOBBY

The Lobby is the heart of the Creative Community. This is the area where you can relax with friends or work on projects in a comfortable setting. Two large TV screens provide information on events taking place within CAM CC and give updates on studio/theatre reservations and other programs and special events. Wi-Fi is available throughout the entire CAM CC lower level along with a computer connected to the SHSU network. Equipment stored behind the reception desk may be checked out through the staff. A concession/catering area inside the lobby may be requested in advance for planned events or other programs.

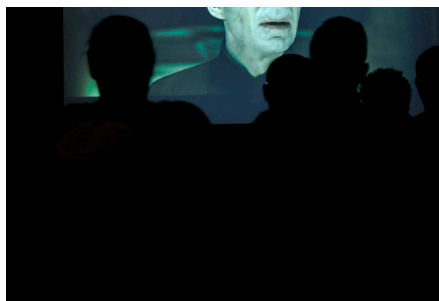


CAM CC THEATRE

The theatre is an adaptable space designed for both multi-media use and performances. By removing the portable theatre chairs, the room can be converted into a large studio. Residents have used the space to perform plays and recitals, host open mic nights, and to study films and television. Available equipment includes:

- HD multi-media viewing with a theatre screen and 7.1 surround sound
- Theatre lights accessible through the Control Booth*
- A Control Booth computer equipped with broadcasting capabilities (cameras, additional lights, and cables are checked out through normal Department of Mass Communication procedures for class projects)
- Two wireless mics allowing backstage communication with the Control Booth
- A Peavy Escort 6000 portable sound system with mics and mic stands
- A baby grand piano

**Access to the Control Booth is allowed only after going through training with staff. See a staff member for details.*



"STAIRS TO NOWHERE"

Sometimes, life in a creative world, especially on a college campus gets a little hectic and overstimulating. Tucked inside the walls of Belvin Hall is a quiet area known as CAM CC's "Stairs to Nowhere." This little nook offers a place to study, relax, meditate, or just be with your thoughts while not straying too far from your room and the safety of the residence hall.

ART GALLERY

Creative Community students are invited to display their personal art, including wall art, sculpture, costumes, or "live exhibits," by making arrangements through the online reservation system at SHSU.EDU/CAMCCLIVING. The space may be reserved for two weeks, or longer with approval.

VAE STUDIO

The Virtual Acoustic Environment room is the largest sound isolated studio in the building. The VAE system is controlled by a wall panel with easy-to-understand operating instructions for how to manipulate studio acoustics. Available options include recital hall, auditorium, cathedral, and arena. You can record/playback or record on your laptop and take your work with you. An optional "foot pedal" in the studio controls the VAE system, and an upright piano in the room is available for use.



ADOBE SUITE

iMACS



RECORDING STUDIO

Creative Community residents can practice recording and improve their sound dubbing skills in the Recording Studio. A limited number of mics, mic stands, etc. are available for checkout.

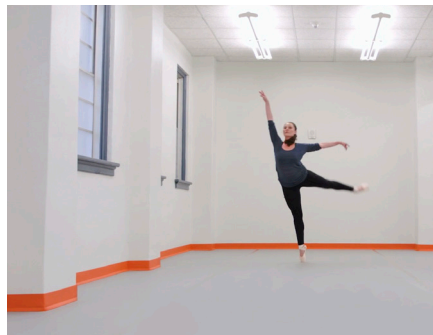
DIGITAL STUDIO

Located next to the Recording Studio is the Digital Studio with two PCs and two iMacs. Each machine has been downloaded with the Adobe Creative Cloud Software, and the two iMacs have the Multi-Track and Audacity software programs for mixing and recording.



MUSIC PRACTICE STUDIOS

CAM CC's Music Practice Studios feature the next generation of sound isolation rooms dedicated to music-making. Using the most advanced technologies available, each of the three, self-contained rooms gives the student musician a space to develop composition and performance skills. The rooms also encourage freedom of expression and privacy to explore new ideas. With added "virtual acoustics" students can learn how to adapt to performing in different spaces ranging from a recital hall to a 10,000-seat arena and get immediate feedback with record/playback during the practice session.



DANCE STUDIO

The Dance Studio in Belvin features a Harlequin sprung dance floor, portable tap dance floors, mirrors, portable ballet bar, seating, and access to a Bose Bluetooth speaker. Appropriate dance footwear is required. Although the rehearsal space is available to all Creative Community residents on a first come, first served basis, you can reserve the studio online at SHSU.EDU/CAMCCLIVING.

CAM CREATIVE COMMUNITY HALL COUNCIL

Membership in the CAM CC Hall Council gives you an opportunity to develop leadership and communication skills while enhancing your on-campus living experience. From planning programs and social events to influencing changes within the building, the Creative Community Hall Council works closely with the staff to improve the quality of life for residents. Hall Council is a great way to connect with other residents and make a difference in your community. It also provides a valuable resumé-building experience that helps you become involved early in an SHSU leadership role. Let your Hall Director know if you are interested.

STUDIO, THEATRE, AND ART GALLERY RESERVATIONS

The studios, theatre, and art gallery are available to CAM CC residents and their accompanied guest(s) for activities and performances associated with your academics. While most areas may be used on a first-come, first-served basis, some areas can also be reserved by Belvin residents for special events. Approved reservations, confirmed through email by CAM CC staff, will have priority over non-reservation use. Reservation forms with requirements and guidelines can be found online at [SHSU.EDU/CAMCCLIVING](https://shsu.edu/camccliving). Information about a specific activity for which a reservation has been approved and scheduled will be displayed on the digital signage in the Lobby.

BEING A RESPONSIBLE MEMBER OF CC

Students who live in Creative Community have built-in resources and opportunities that will help them develop their potential for success. In order to maximize the student-life experience not only for yourself, but for the students you will be living with, the following guidelines are offered:

- *Please be aware that you are responsible for the conduct of guests you invite into the facility.*
- *Food and drinks are permitted only in the Concession Area of the Lobby or during approved staff/hall council programs. Bottled water is allowed in most locations unless noted by signage.*
- *Sleeping in the public areas of Creative Community is not allowed at any time.*
- *Prospective students and their parents tour our building throughout the year. Be mindful of inappropriate behavior and language when using the space. Also, please remember that in addition to being a residential facility, the CAM Creative Community functions as an academic environment and should be treated as all other academic buildings on campus.*
- *Personal items should not be stored or left in any location other than your residential room. The University is not responsible for personal items that are thrown away or stolen.*
- *Remember to clean up after yourself. Residents may be charged for excessive trash upon reviewing video recordings. Vacuums are available upon request.*
- *Please be respectful of exhibits in the gallery and do not touch or move any items that are displayed.*

A complete list of guidelines can be found [SHSU.EDU/CAMCCLIVING](https://shsu.edu/camccliving).

Creative C

ative Comm

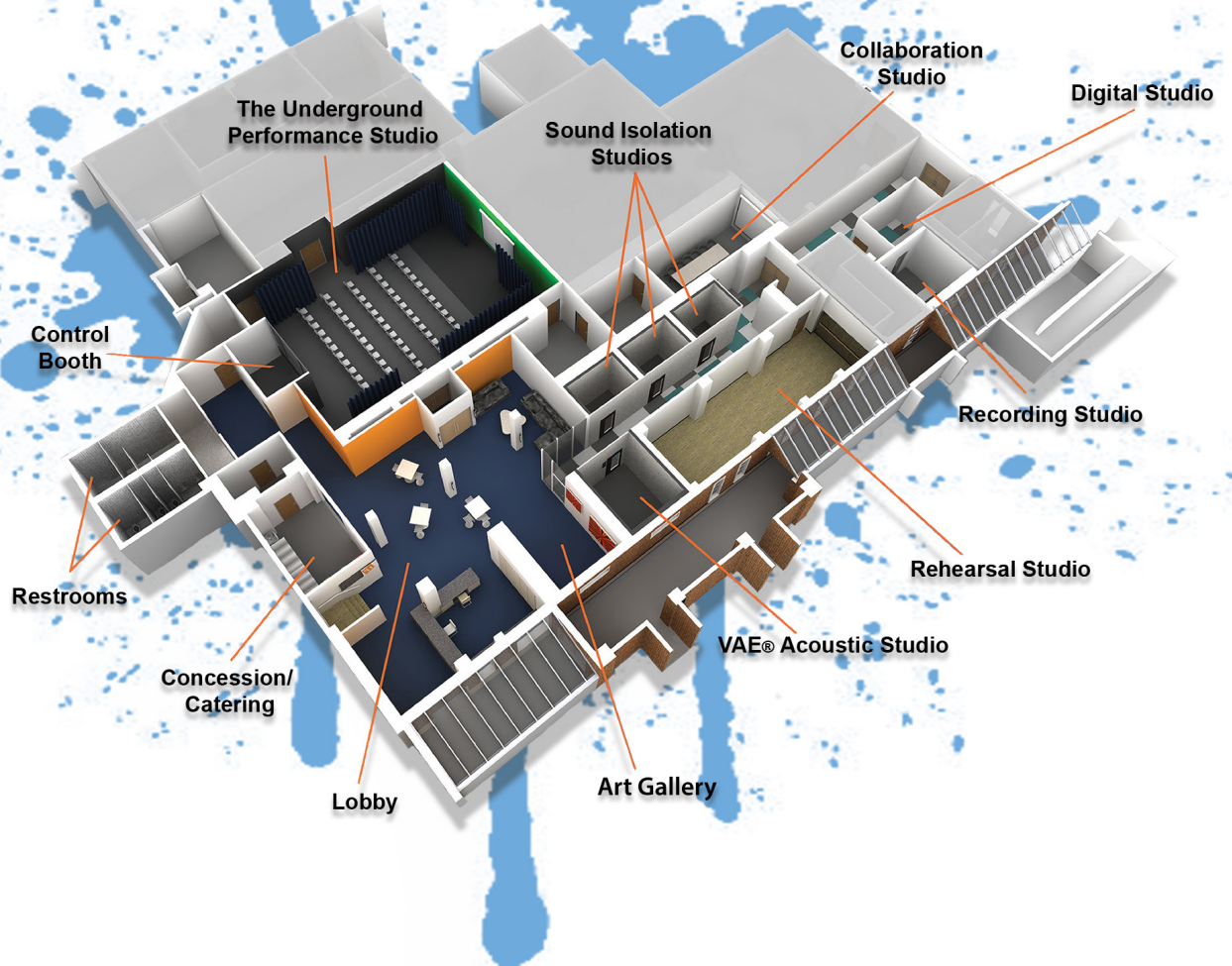
e Communit

Community C

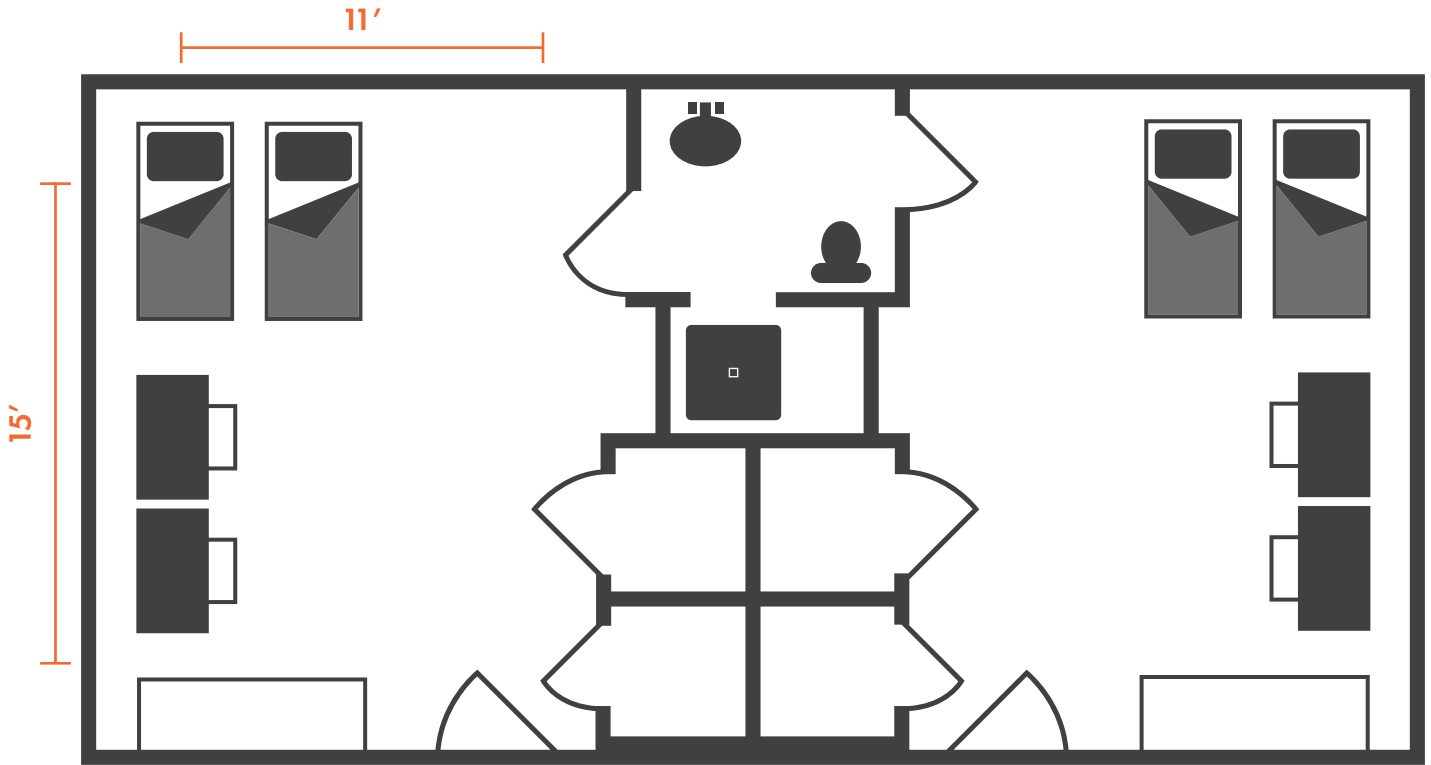
Community Crea

ty Creative

CREATIVE COMMUNITY FLOOR PLAN



STUDENT ROOM FLOOR PLAN



- BUILT-IN VANITY AND CLOSETS
- BATHTUBS AND SHOWERS (BELVIN EAST/WEST)
- SHOWERS ONLY (BUCHANAN NORTH/SOUTH)
- THERMOSTAT IN ROOM

Coinless laundry rooms are located on the 1st, 2nd and 3rd floors. Students have the option to choose a disabled access room or upgrade to a premium double (larger) room. The hall is equipped with central heat and air conditioning to provide a uniform temperature throughout the premises.

ALL ROOMS INCLUDE

- 2 BEDS
- 2 DESKS
- 1 DRESSER
- 1 BUILT-IN DRESSER

CONTACT

Your Residence Hall Director (RHD), Resident Advisor (RA), and Graduate Assistant are available to answer your questions. Inquiries can also be sent to: BelvinCC@SHSU.edu.

Helpful Phone Numbers

RA Office	936.294.4022
GA Office	936.294.2613
Reception Desk	936.294.2612
RHD Office	936.294.3241
RA Rm G-2	936.294.4002
RA Rm 131	936.294.2633
RA Rm 202	936.294.3235
RA Rm 219	936.294.4508
RA Rm 302	936.294.3236
RA Rm 317	936.294.4005

Located near the heart of the university, the CAM CC is the perfect living community for SHSU College of Arts & Media students.

